

# Tubular Stainless Steel Door Furniture

1000RRS10

RRS10



## Application:

- For wooden doors between 32-54mm thick
- 19mm diameter handle
- Sprung
- Supplied with bolt-through fixings
- Concealed fixings
- Non-handed

## Standards:

- BS EN 1634 Part 1 : 2000 assessed for use on 60 minute timber fire doors
- Cycle tested to 200,000 cycles
- Corrosion testing - 480 hours - EN 1670 Grade 4

## Specification:

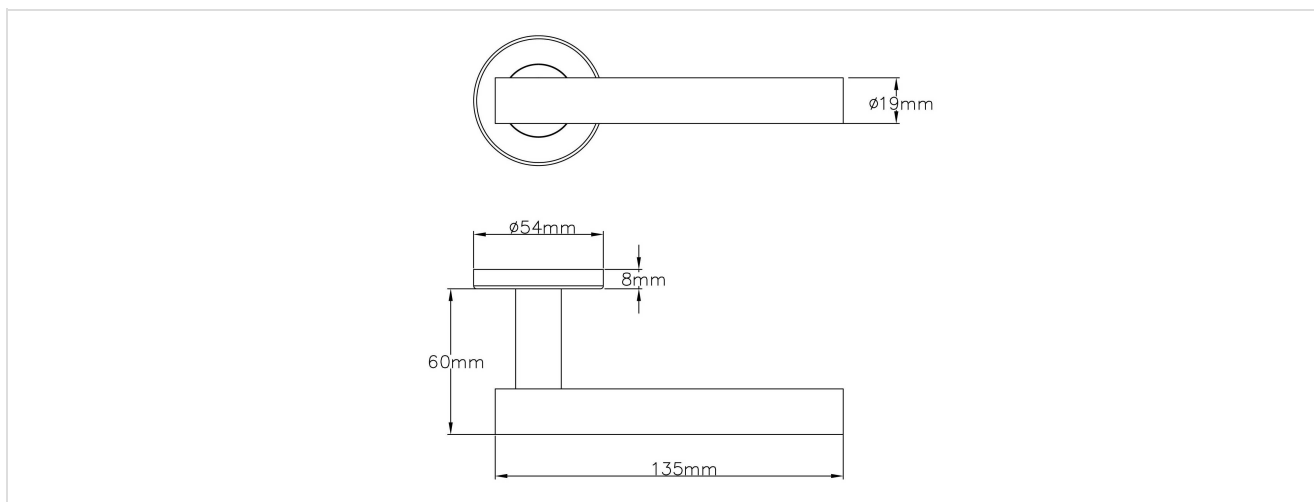
- Manufactured from Grade 304 stainless steel
- Handle Length: 135mm
- Handle Projection: 60mm
- Rose Diameter: 54mm
- Rose Projection: 8mm
- Please refer to separate page for accessories
- Supplied with push-on rose as standard
- Available with screw-on rose upon request
- Available in SS finish as standard



## Finish:

- SS - Satin Stainless Steel

## Technical Design:



## Variants:

Code	Description
J-1000RRS10SS	10 STYLE LEVER ON S ROSE SSS